

squishable®



Superhero Costume

Materials list:

Felt – at least 7" x 5"

Fabric for cape – at least 9.5" x 19"

1/4" elastic – 19.75"

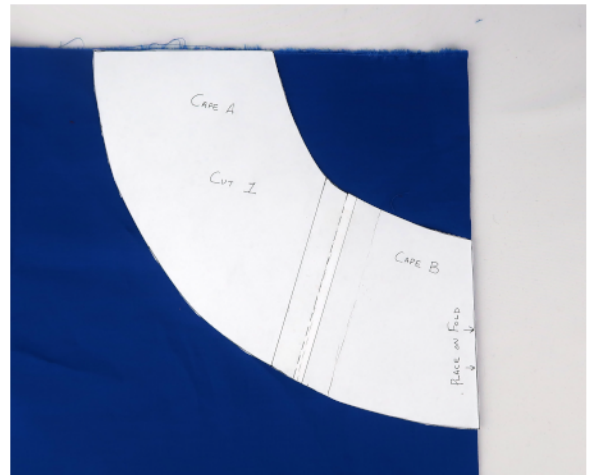
Sewing machine or needle and thread for hand stitching

Scissors

Iron (optional)

Preparing the pattern: Print out the pattern at the back of the instructions. Cut out both cape pieces and tape them together along the dotted and solid lines to form the full cape pattern.

1. Fold the cape fabric in half. Line up the cape pattern on the fold and cut out the cape.



2. We're going to create a rolled hem along the top edge of the cape. A rolled hem involves making a double fold at the edge of the fabric. Fold the fabric 1/4" from the edge towards the inside of the cape. Press with your fingers or an iron. Fold again another 1/4". Press or pin in place, being careful to smooth out any bunched fabric. Sew along the fold to hold in place.



3. Roll the bottom edge of the cape using the same method as the previous step.

4. We're going to do rolled hems on the sides of the cape, but this time our edge allowance is going to be 1/2". This is because we'll be attaching the elastic as well and the extra fabric will help reinforce our stitches.

5. Cut a 3" length of 1/4" elastic. Place the elastic at the top edge of the folded side of the cape so that the end of the elastic overlaps 5/8"-3/4" and pin in place. Place the other end of the elastic so that it's about 1/2" away from the first end of the elastic, and make sure that it overlaps the same amount over the folded side of the cape. Pin in place.



6. Straight stitch along the edge of the cape twice—once 1/8" away from the edge of the fabric and once 3/8" away from the edge of the fabric.

7. Repeat on the opposite side of cape.

8. Now it's time to work on the mask. Cut the mask pattern from your rectangle of felt twice.



9. Stack the felt mask pieces on top of each other. Using the remaining length of elastic (13.75"), slide one in between the stacked pieces of felt at the corner at the side of the mask and pin in place. Repeat on the opposite side.



10. Stitch 1/8" around the edge of the mask. Stitch 1/8" around the inside of the eye holes.



Sewing Suppliers:

JoAnn Fabrics
Michaels
Vogue Fabrics

